



Burleigh County

Emergency Management
221 N 5th St
Bismarck ND 58501
(701) 222-6727

NEWS RELEASE FOR IMMEDIATE RELEASE

June 21, 2018

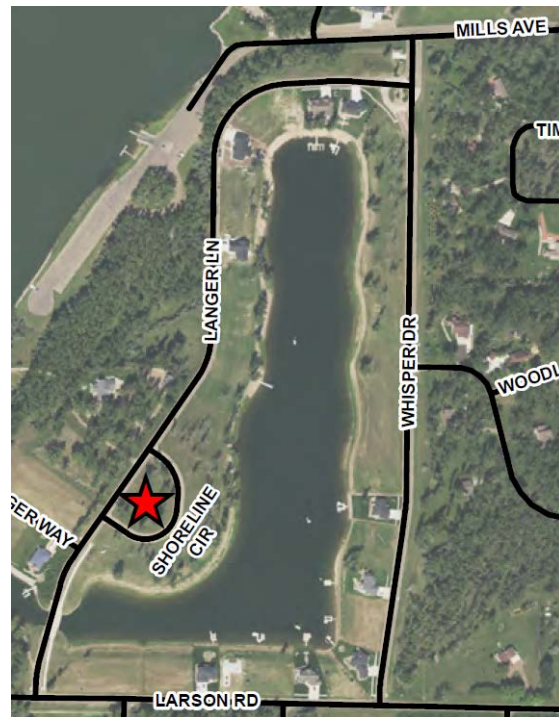
Contact: Mary Senger, Burleigh County Emergency Manager
701-222-6727

BURLEIGH COUNTY OPENS SELF-FILL SANDBAGGING SITES

Bismarck, ND—Burleigh County has established two, self-fill sandbagging sites for citizens to fill and take sandbags, free of charge. Citizens need to bring their own shovels and gloves.



Hogue Island Boat Ramp Sandbagging Site
Hogue Road



Fox Island Sandbagging Site
Shoreline Circle

Burleigh County Commission Chairman Jim Peluso relays “The Burleigh County Flood Annex is being utilized. The plan was originally developed in 2010 and has response actions corresponding to forecast gage predictions.” The Burleigh County Sheriff’s Department and the Burleigh County Highway Department continue to monitor areas for water encroachment.

Additional information regarding the Missouri River Levels, Garrison Dam Releases, and Groundwater Maps are available on the Burleigh County website: burleighco.com